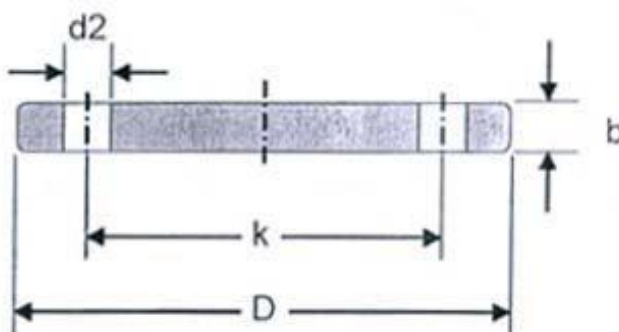




**CITIZEN METALS PVT. LTD**  
 AN ISO 9001:2008/ 14001:2004/ 18001:2007  
 CERTIFIED COMPANY

## DIN 2527 PN6 Blind Flanges Dimension



DIN	No. of holes	PN6				KG
		D	b	k	d2	
10	4	75	12	50	11	0.38
15	4	80	12	55	11	0.44
20	4	90	14	65	11	0.66
25	4	100	14	75	11	0.82
32	4	120	14	90	14	1.18
40	4	130	14	100	14	1.39
50	4	140	14	110	14	1.62
65	4	160	14	130	14	2.14
80	4	190	16	150	48	3.43
100	4	210	16	170	18	4.22
125	8	240	18	200	18	6.1
150	8	265	18	225	18	7.51
175	8	295	20	255	18	10.41
200	8	320	20	280	18	12.31
250	12	375	22	335	18	18.55
300	12	440	22	395	22	25.47
350	12	490	22	445	22	31.78
400	16	540	22	495	22	38.5
500	20	645	24	600	22	60.13
600	20	755	28	705	26	96.07
700	24	860	30	810	26	133.8
800	24	975	32	920	30	183.29
900	24	1075	36	1020	30	251.7
1000	28	1175	42	1120	30	350.98

Stainless Steel DIN2527 PN6 Blind Flange Dimensions, Carbon Steel DIN2527 PN6 Blind Flange Dimensions, Alloy Steel DIN2527 PN6 Blind Flange Dimensions

Tel: +91-22-61905600

Url: <http://citizenflanges.com>

Email: [exports@citizenmetals.com](mailto:exports@citizenmetals.com)